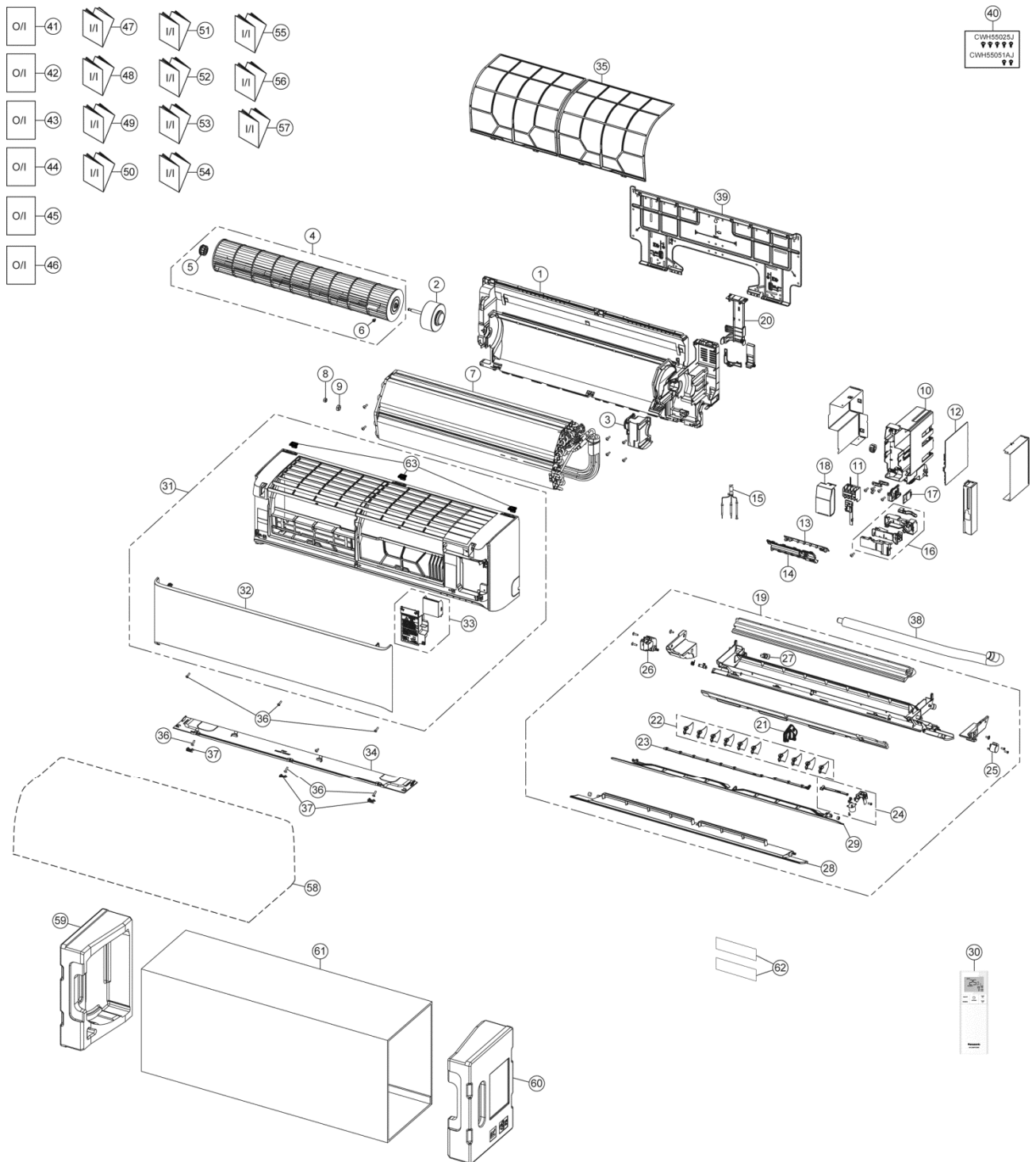


## 22. Exploded View and Replacement Parts List

### 22.1 Indoor Unit



**Note**

The above exploded view is for the purpose of parts disassembly and replacement.  
 The non-numbered parts are not kept as standard service parts.

SAFETY	REF. NO.	PART NAME & DESCRIPTION	QTY.	CS-XZ20XKEW-H	CS-XZ25XKEW-H	REMARK
	1	CHASSIS COMPLETE	1	ACXD50C04190	←	
⚠	2	FAN MOTOR	1	L6CBYYL0306	←	O
	3	FAN MOTOR BRACKET	1	ACXD54-04360	←	
	4	CROSS-FLOW FAN COMPLETE	1	ACXH02C01330	←	
	5	BEARING ASSY	1	CWH64K1010	←	
	6	SCREW - CROSS-FLOW FAN	1	CWH551146	←	
	7	EVAPORATOR	1	ACXB30C32540	←	
	8	FLARE NUT (LIQUID)	1	CWT251048	←	
	9	FLARE NUT (GAS)	1	CWT251049	←	
	10	CONTROL BOARD CASING	1	ACXH10-08620	←	
⚠	11	TERMINAL BOARD COMPLETE	1	ACXA28C05900	←	O
⚠	12	ELECTRONIC CONTROLLER - MAIN	1	ACXA73C72460	ACXA73C72470	O
⚠	13	ELECTRONIC CONTROLLER-INDICATOR	1	ACXA73-37110	←	O
	14	INDICATOR HOLDER	1	ACXD93-22430	←	
⚠	15	SENSOR COMPLETE	1	CWA50C2663	←	O
⚠	16	GENERATOR COMPLETE	1	ACXH94C01420	←	O
⚠	17	ELECTRONIC CONTROLLER-WIFI	1	ACXA73-28520	←	O
	18	CONTROL BOARD TOP COVER	1	ACXH13-08680	←	
	19	DISCHARGE GRILLE COMPLETE	1	ACXE20C07700	←	
	20	BACK COVER CHASSIS	1	ACXD93-22420	←	
	21	FULCRUM	1	ACXH62-00790	←	
	22	VERTICAL VANE	10	ACXE24-04000	←	
	23	CONNECTING BAR	1	ACXE26-02550	←	
⚠	24	AIR SWING MOTOR ASSY	1	ACXA98K00220	←	O
⚠	25	AIR SWING MOTOR	1	ACXA98-02420	←	O
⚠	26	GEAR-COMPLETE	1	ACXH68C00520	←	O
	27	CAP - DRAIN TRAY	1	CWH521259	←	
	28	HORIZONTAL VANE COMPLETE - BIG	1	ACXE24C05190	←	
	29	HORIZONTAL VANE COMPLETE	1	ACXE24C05200	←	
⚠	30	REMOTE CONTROL COMPLETE	1	ACXA75C20671	←	O
	31	FRONT GRILLE COMPLETE	1	ACXE10C16740	←	
	32	INTAKE GRILLE COMPLETE	1	ACXE22K10460	←	
	33	GRILLE DOOR COMPLETE	1	ACXE14C01430	←	
	34	PARTICULAR PLATE	1	ACXD90K02390	←	
	35	AIR FILTER	2	ACXD00-02990	←	
	36	SCREW - FRONT GRILLE	6	XTT4+16CFJ	←	
	37	CAP - FRONT GRILLE	3	ACXH52-04000A	←	
	38	DRAIN HOSE	1	ACXH85-00210	←	
	39	INSTALLATION PLATE	1	ACXH36-00840	←	
	40	BAG COMPLETE - INSTALLATION SCREW	1	CWH82C1705	←	
	41	OPERATING INSTRUCTION	1	ACXF55-33270	←	
	42	OPERATING INSTRUCTION	1	ACXF55-33280	←	
	43	OPERATING INSTRUCTION	1	ACXF55-33290	←	
	44	OPERATING INSTRUCTION	1	ACXF55-30283	←	
	45	OPERATING INSTRUCTION	1	ACXF55-30293	←	
	46	OPERATING INSTRUCTION	1	ACXF55-30303	←	
	47	INSTALLATION INSTRUCTION	1	ACXF60-42502	←	

SAFETY	REF. NO.	PART NAME & DESCRIPTION	QTY.	CS-XZ20XKEW-H	CS-XZ25XKEW-H	REMARK
	48	INSTALLATION INSTRUCTION	1	ACXF60-42512	←	
	49	INSTALLATION INSTRUCTION	1	ACXF60-42522	←	
	50	INSTALLATION INSTRUCTION	1	ACXF60-42532	←	
	51	INSTALLATION INSTRUCTION	1	ACXF60-42542	←	
	52	INSTALLATION INSTRUCTION	1	ACXF60-42552	←	
	53	INSTALLATION INSTRUCTION	1	ACXF60-42562	←	
	54	INSTALLATION INSTRUCTION	1	ACXF60-42572	←	
	55	INSTALLATION INSTRUCTION	1	ACXF60-42582	←	
	56	INSTALLATION INSTRUCTION	1	ACXF60-42592	←	
	57	INSTALLATION INSTRUCTION	1	ACXF60-42602	←	
	58	BAG	1	ACXG86-05760	←	
	59	SHOCK ABSORBER- LEFT	1	ACXG70-12960	←	
	60	SHOCK ABSORBER - RIGHT	1	ACXG70-12970	←	
	61	C.C.CASE	1	ACXG50-57101	←	
	62	MODEL LABEL	2	ACXF85-90400	ACXF85-90410	
	63	PARTICULAR PIECE -LOCK	3	ACXD93-18690A	←	

(NOTE)

- All parts are supplied from PAPAMY, Malaysia (Vendor Code: 00029488).
- "O" marked parts are recommended to be kept in stock.